

Square High Table 80

OTAZEN

OTASTR16A

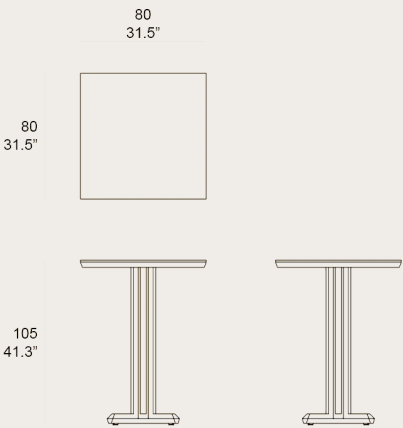
STRIPE COLLECTION by Lagranja Design

The defining feature of the Stripe Collection lies in its distinctive lines, creating a dynamic and refined aesthetic. Its signature weaving is not just a decorative element but an integral part of the structure, providing both strength and flexibility. A modern touch that remains true to its natural and organic essence. Beyond its striking appearance, Stripe is designed for durability and functionality. Crafted from weather-resistant teak, it withstands various outdoor conditions without compromising comfort.



Remarks

- Table top Solid teak wood FSC 100% and porcelanic surface
- Streching Stainless steel powder coated
- Base Solid teak wood FSC 100%
- Fittings Stainless steel 304
- Glides PA rubber
- Dining tables Include adjusters
- Packaging Carton box double wall K275, plastic free



Square High Table 80

OTAZEN

OTASTR16A

Finishing

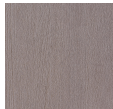


Finishing
Natural Teak

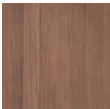
Teak Wood



Natural
Teak



Weathered
Teak



Protected
Teak



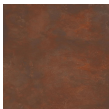
Black Teak

Top Surface



Top Surface
Bronzo Bruno Matte

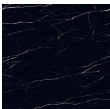
Porcelanic Surface



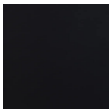
Bronzo
Bruno
Matte



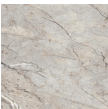
Ceppo
Grigio
Matte



Marquina
Nero Matte



Nebula
Nero Matte



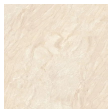
Salika
Grigio
Matte



Hutan
Ubud
Matte



Statuario
Altissimo



Daino
Royale
Matte

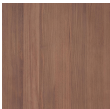
Teak Wood



Natural
Teak



Weathered
Teak



Protected
Teak



Black Teak


Rain Cover



Square High Table 80

OTAZEN

OTASTR16A



Rain Cover

With Rain Cover



With Rain Cover



Without Rain Cover

