

Round Coffee Table Teak D150

OTAZEN

OTAJAS09AT

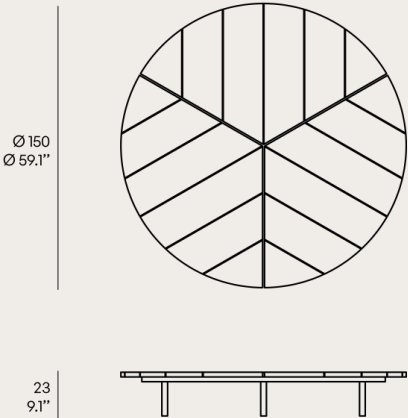
JASMINE COLLECTION by Pensi Studio

Jasmine collection is an organic concert of different components which can be flexibly combined into comfortable and original islands of relax.



Remarks

- Table top in Solid teak wood FSC 100%
- Structure in Solid teak wood FSC100% and Aluminium Powdercoated
- Rope in Polypropylene UV protected
- Fittings in Stainless steel 304
- Glides in PA rubber
- Packaging in Carton box double wall K275, plastic free



Round Coffee Table Teak D150

OTAZEN

OTAJAS09AT

Teak Wood



Teak Wood

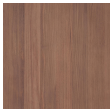
Natural Teak



Natural
Teak



Weathered
Teak

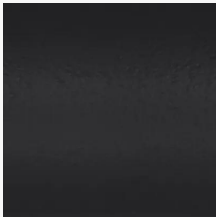


Protected
Teak



Black Teak

Aluminium Frame



Aluminium Frame

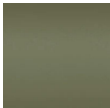
Grey Sand Texture



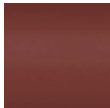
Beige
Junction



Grey Sand
Texture



Calpulative
Olive



Red Sand
Texture

Rain Cover



Rain Cover

With Rain Cover



With Rain
Cover



Without
Rain
Cover



Round Coffee Table Teak D150

OTAZEN

OTAJAS09AT

